

GATEWAY Property File Creation
Oracle FLEXCUBE Universal Banking
Release 14.8.2.0.0
Part No. G52361-01
[April] [2026]



Table of Contents

1.	CREATING PROPERTY FILE FOR GATEWAY APPLICATIONS	1-1
1.1	INTRODUCTION	1-1
1.2	CREATING PROPERTY FILES	1-1
1.2.1	<i>Gateway EJB Application.....</i>	<i>1-3</i>
1.2.2	<i>Gateway MDB Application.....</i>	<i>1-13</i>
1.2.3	<i>Gateway HTTP Servlet Application.....</i>	<i>1-22</i>
1.2.4	<i>Gateway Web Service Application.....</i>	<i>1-28</i>
1.2.5	<i>REST Services Application</i>	<i>1-39</i>

1. Creating Property File for Gateway Applications

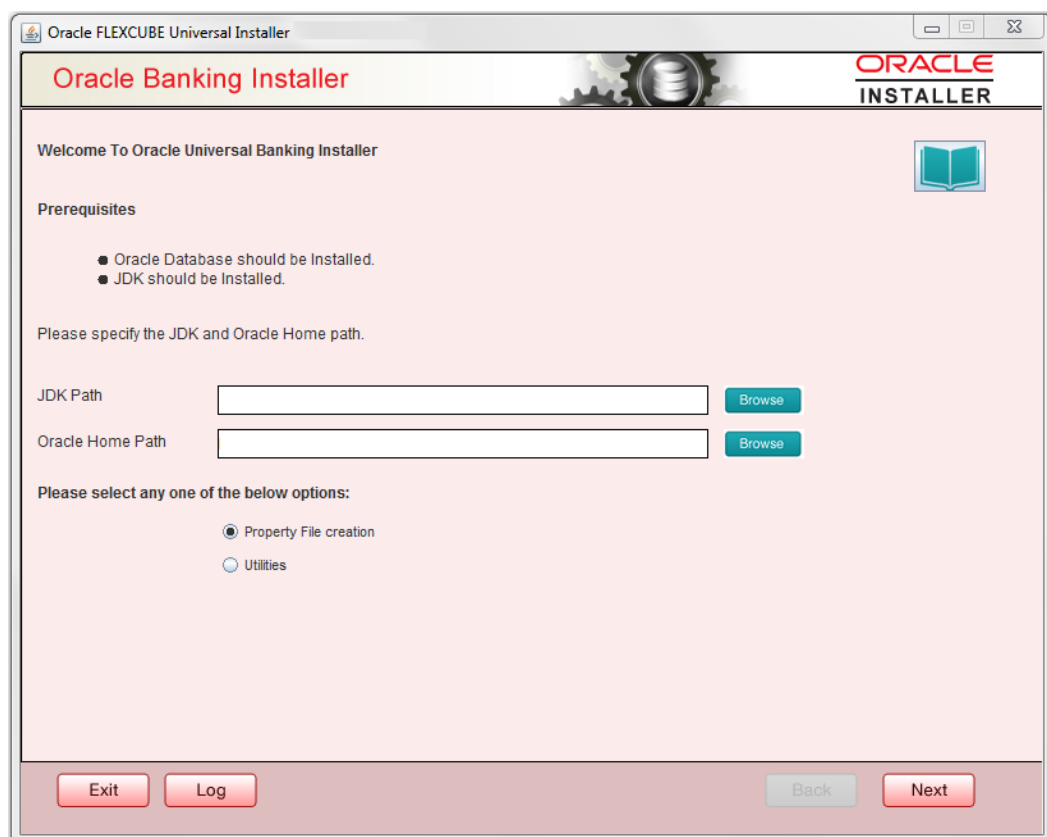
1.1 Introduction

This chapter explains the steps to create the property file for the gateway components viz. Enterprise Java Bean (EJB), Message Driven Beans (MDB), Web Services and Servlet.

1.2 Creating Property Files

Follow the steps given below:

1. Start Oracle FLEXCUBE Universal Banking Solutions Installer - FCUBSInstaller.bat from INSTALLER\SOFT\GUI. Prerequisites screen is displayed.



2. Select component as 'Gateway' and click 'Next' button.

Oracle FLEXCUBE Universal Installer 12.5.0.0.0

Oracle Banking Installer

ORACLE
INSTALLER

Select one of the Components

Load Existing Property File

☐ INFRA
 ☐ Scheduler
 ☒ Gateway
 ☐ Switch Interface Installation

Select Oracle Product Processors

☒ Oracle FLEXCUBE Universal Banking
☐ Oracle FLEXCUBE Enterprise Limits and Collateral Management (CO-DEPLOY)
☐ Oracle Banking Payments
☐ Oracle Banking Corporate Lending ☐ Open Development Tool
☐ Oracle Banking Treasury ☐ Oracle FLEXCUBE Universal Banking for JAPAN
☐ Oracle Banking Trade Finance

Select Plugins to be Installed

Host Address
☐ Origination ☐ Scheduler

☐ Reports ☐ SIANET Adapter

☐ DMS ☐ Insulation ☐ External Adapter required

3. Enter the Required details in the Screen.

Specify the EAR name, valid Application Server Path, Source and EAR destination path and click 'Next' button.

Oracle FLEXCUBE Universal Installer 12.5.0.0.0

Oracle Banking Installer

**ORACLE
INSTALLER**

Provide Environment details.

EAR Name

File Separator Style

Application Server

☐ OBMA PP Installed

Application Server Path

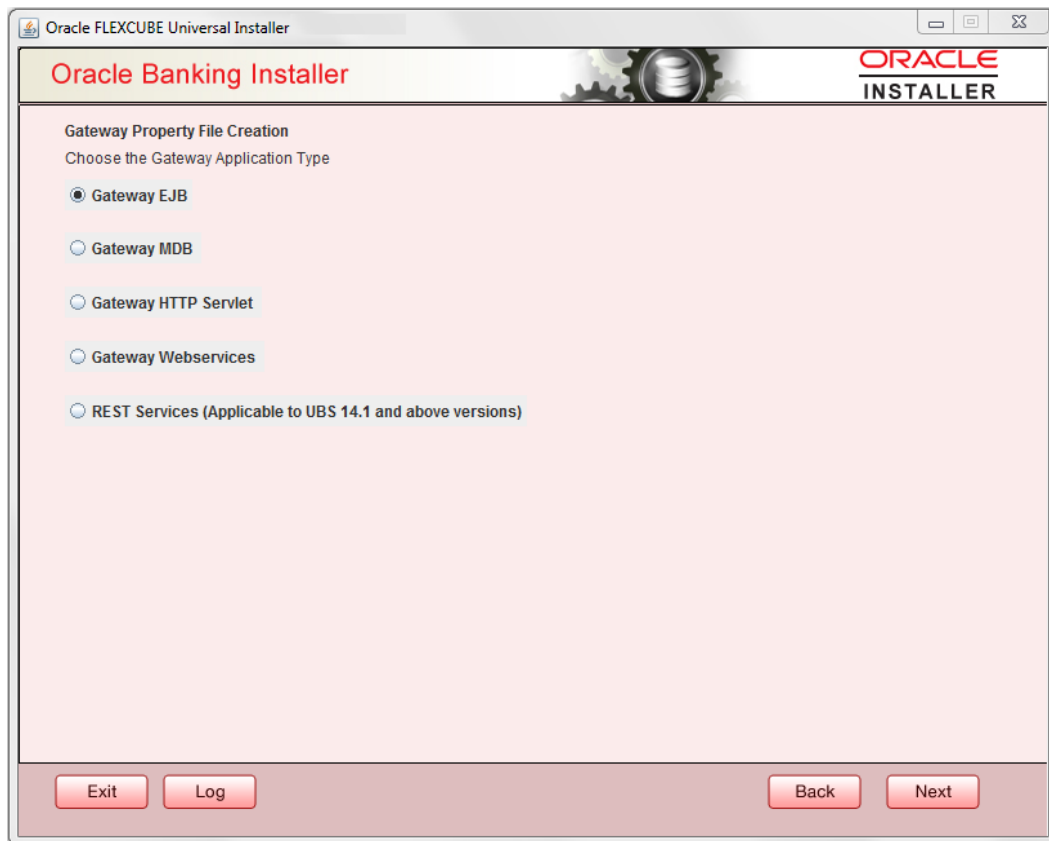
Source Path

Ear Destination Path

Cookie-Name (JSESSION_ID)

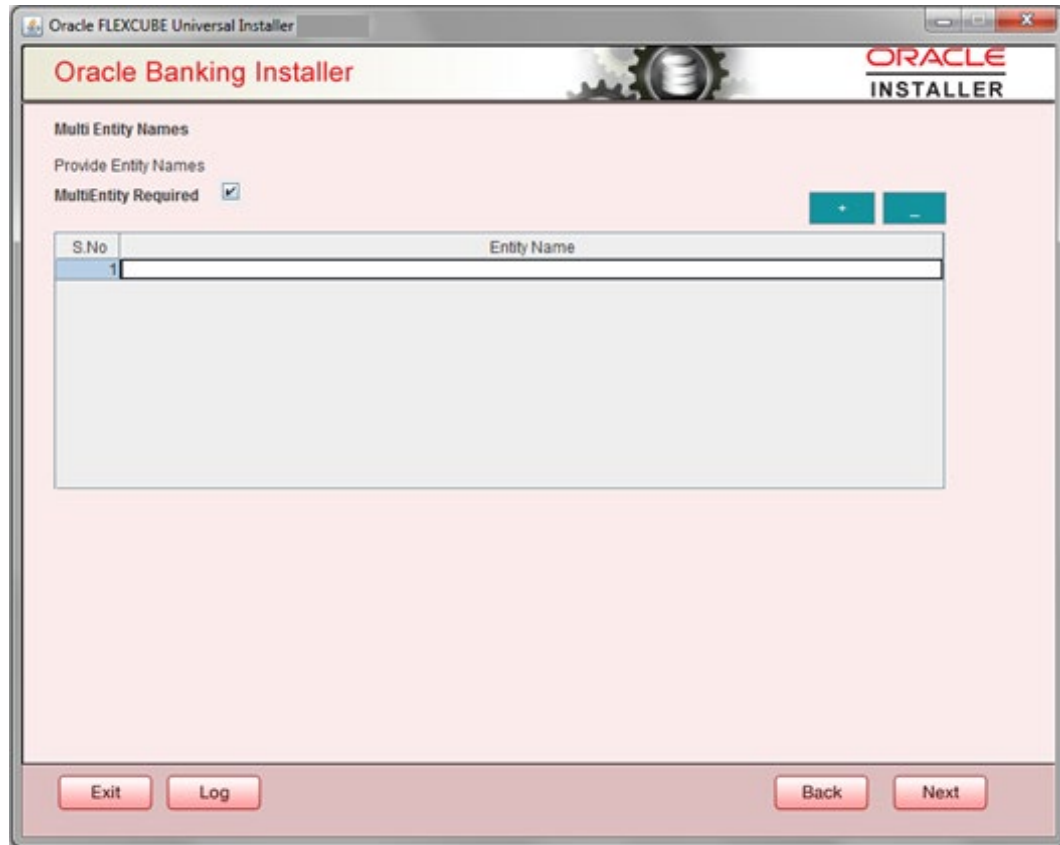
1.2.1 Gateway EJB Application

1. Select 'Gateway EJB' as the application type as shown in the below Screen.



2. Click 'Next'. The following screen is displayed:

The installer displays the 'Multi Entity' screen.



MultiEntity Required

Select the multi entity check box for enabling the multi entity deployment.

After selecting the multi entity option '+', '-' buttons will be enabled for capturing the entity Name

+ Button:

New row will be added for capturing new entity name.

- Button:

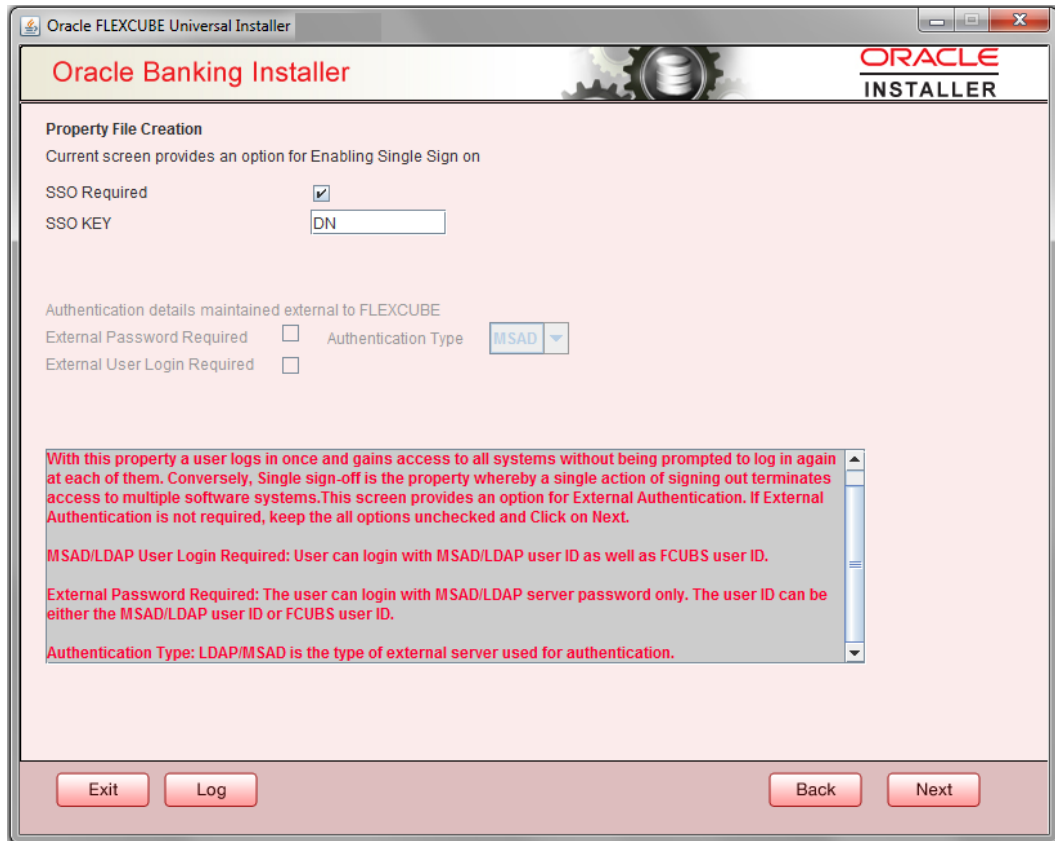
Select the entity name and click – button, deletion of existing entity name will be done

Entity Name:

Enter the entity name as single word

For example: ENTITY1

4. Click 'Next'. The following screen is displayed:



5. Specify the following details.

SSO Required

Check this box to enable single sign-on (SSO). If you check this box, you need to specify the SSO Key.

SSO Key


Specify the SSO key. If you have checked the box 'SSO Required', it is mandatory to specify the SSO key.

If you have checked the box 'SSO Required', then the Installer will skip the following two screens and will directly navigate to the SSL screen shown below in this manual.

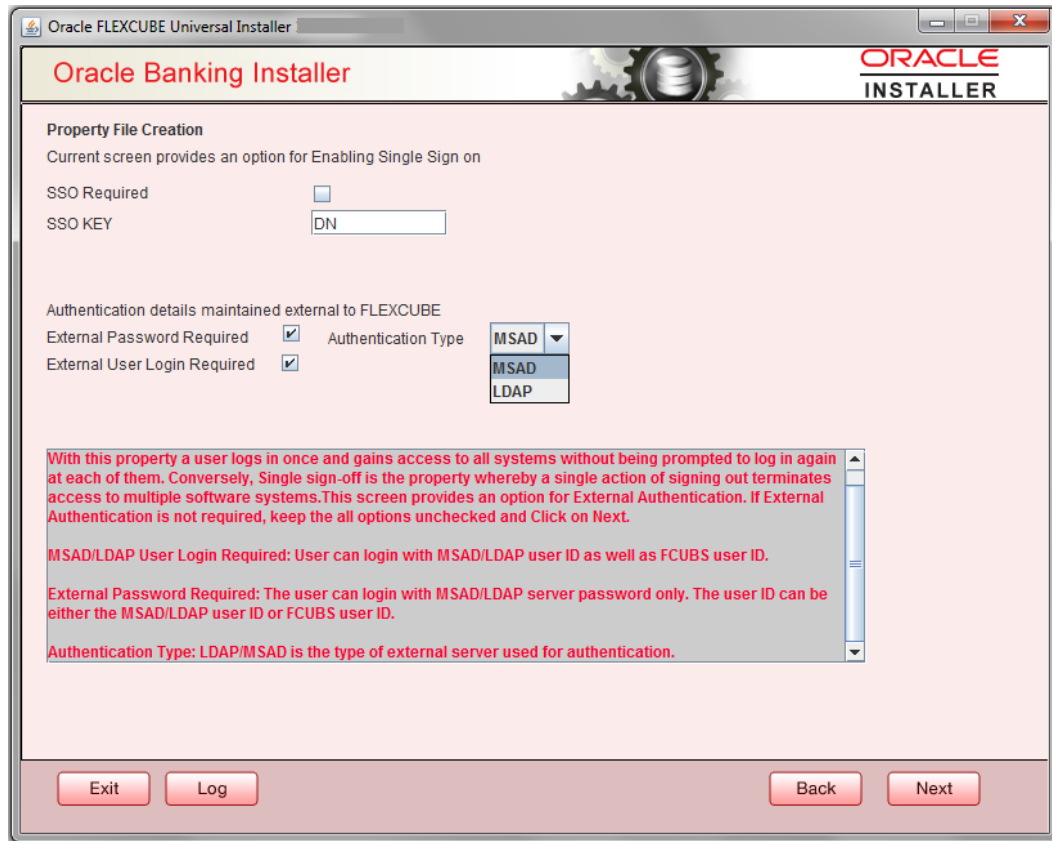
If you have not checked the box 'SSO Required', then click 'Next'. The following screen is displayed.

External User Login Required

Check this box to enable user login using MSAD/LDAP user Id.


 If you check this box, the user can login with MSAD/LDAP server user Id as well as FCUBS user Id. If you do not check this box, the user can login using FCUBS user Id only.

(Note-MSAD: Microsoft Active Directory, LDAP: Lightweight Directory Access Protocol)



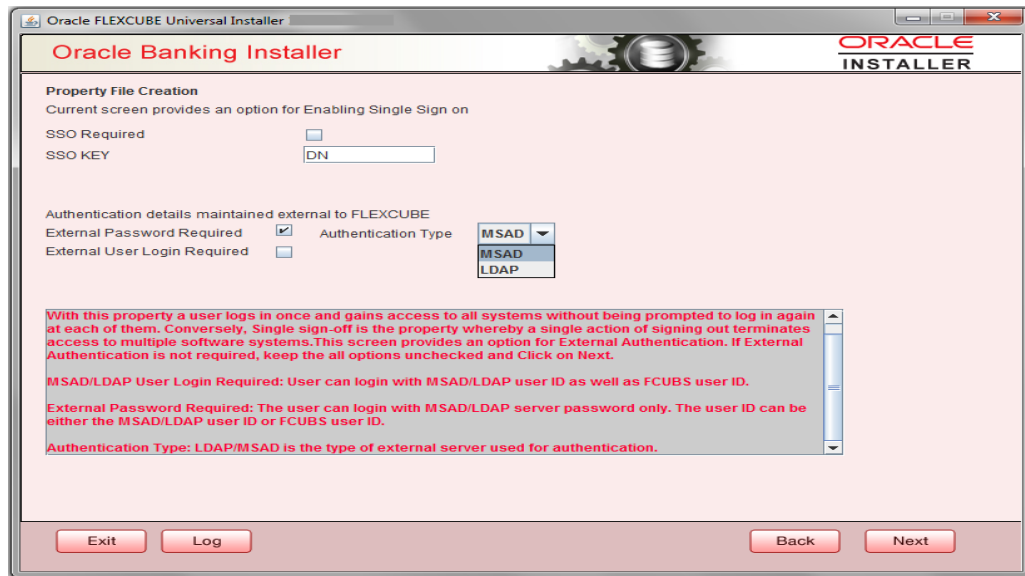
External Password Required

Check this box to allow user login using MSAD/LDAP password irrespective of the user Id.

 If you check this box, the user can login using MSAD/LDAP server password only. The user Id can be one of the following:

- MSAD/LDAP user Id
- FCUBS user Id

If you do not check this box, then the installer skips the following screen and directly navigates to the Modifying Gateway Properties screen.



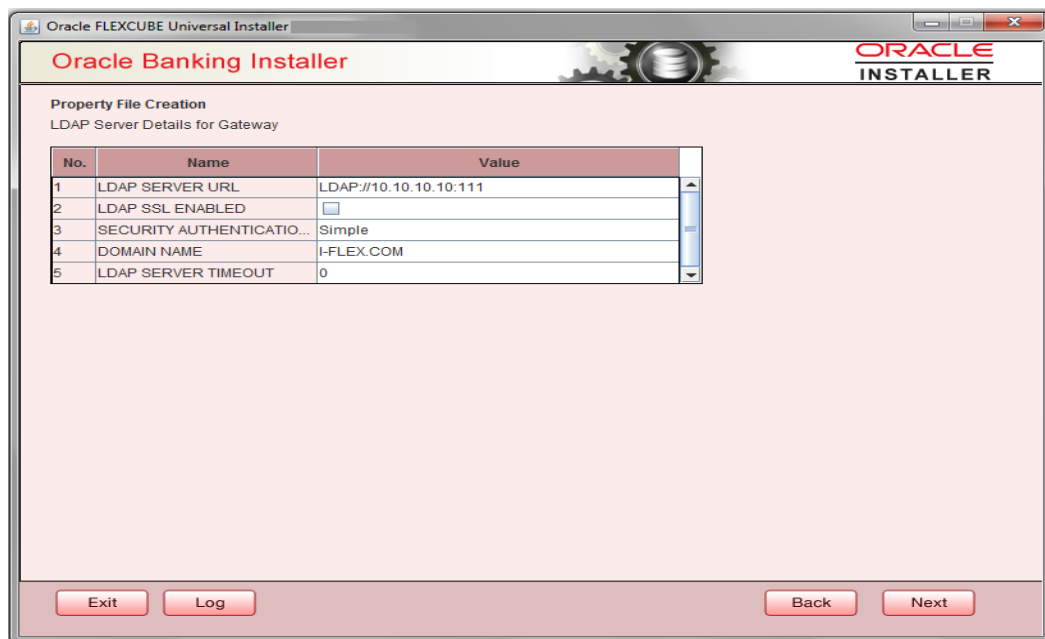
Authentication Type

Select the authentication type. This is the type of external server that is used. You can select one of the following options:

- MSAD (Microsoft Active Directory)
- LDAP (Lightweight Directory Access Protocol)

The default option is MSAD; however, you can change it

6. If you check the box, then the installer navigates to the following screen on clicking 'Next' button.



7. Specify the following LDAP server details.

LDAP Server URL

Specify the URL to access the LDAP server where the external user ID and password are maintained.

LDAP SSL Enabled

Check this box if the LDAP server is SSL enabled. If you check this box, then you need to specify the SSL port also in the field LDAP SERVER URL.

By default, this check box is unchecked. However, you can change this.

Security Authentication Type

Depending on the authentication mechanism supported by the LDAP server, select one of the following:

- simple
- strong



Note the following:

- Different servers support different authentication mechanisms.
- By default, the security authentication type is 'Simple'; however, you can change this.

Domain Name

Specify the domain name.

LDAP Server Timeout

Specify the LDAP server timeout in milliseconds. This must be a positive integer value. For example you can specify 1000, 10000 or 5000. If it is zero or less, it indicates that no read timeout is specified. Then the wait for the response infinite until it is received.

By default, the LDAP server timeout is zero; however, you can change this.

8. Click 'Next'. The following screen is displayed:

Property File Creation
Current screen provides an option for modifying the Gateway Properties

XSD Path: /Kernel11.1/GW_EJB/XSD/

Logger File: /Kernel11.1/GW_EJB/config/gw_ejb_logger.properties

Debug Path: /Kernel11.1/GW_EJB/log/

Security Key for Encryption: oraclefinancials

SMS Pool Name: jdbc/fc/devDSSMS

DataSource: FLEXTEST.WORLD

☐ POSS DataSource ☒ OPSS CSF Available

POSS DataSource: POSSTEST.WORLD

Distributed Schema: No

MSG IN log Required: No

MSG OUT log Required: No

☐ Integration with CN Logger

Exit Log Back Next

9. Specify the following details.

XSD Path

Specify the path to the XSD file. File name is not required. File separator must be '/'. There must be a '/' at the end. All the relevant XSD files must be manually copied to this location.

E.g.:

For Windows: D:\Kernel11.1\GW_EJB\XSD\

For Linux: /Kernel11.1/GW_EJB/XSD/

Logger File

Specify the path to the 'gw_ejb_logger.properties' file with the file name. The file must be manually copied to the specified location.

E.g.:

For windows: D:\Kernel11.1\GW_EJB\config\gw_ejb_logger.properties

For Linux: /Kernel11.1/GW_EJB/config/gw_ejb_logger.properties

Debug Path

Specify the path to the folder where the application creates the logs. There must be a '/' at the end. You need to manually create the specified folder structure.

E.g.:

For windows: D:\Kernel11.1\GW_EJB\log\

For Linux: /Kernel11.1/GW_EJB/log/

Security Key for Encryption

Specify the security key for the Encryption, here in this case it is 'oraclefinancials'.

SMS Pool Name

Specify SMS Pool Name, here in this case it is 'jdbc/fcjddevDSSMS'.

DataSource

The JDBC data source is an object bound to JNDI tree and provides database connectivity through a pool of JDBC connections.

POSS Datasource

Check this box if POSS is required. If you check this box, you need to specify the POSS Datasource Name in the field below this.

OPSS CSF Available

Indicate whether OPSS-CSF is installed or not.



Please choose this only if Oracle Platform Security Services - Credential Store Framework (CSF) is installed as per the guidelines in the pre-requisite document. It is recommended that you install CSF for safeguarding application specific security credentials.

Distributed Schema

If the schema is distributed, select 'Yes'.

If the schema is not distributed, select 'No'.

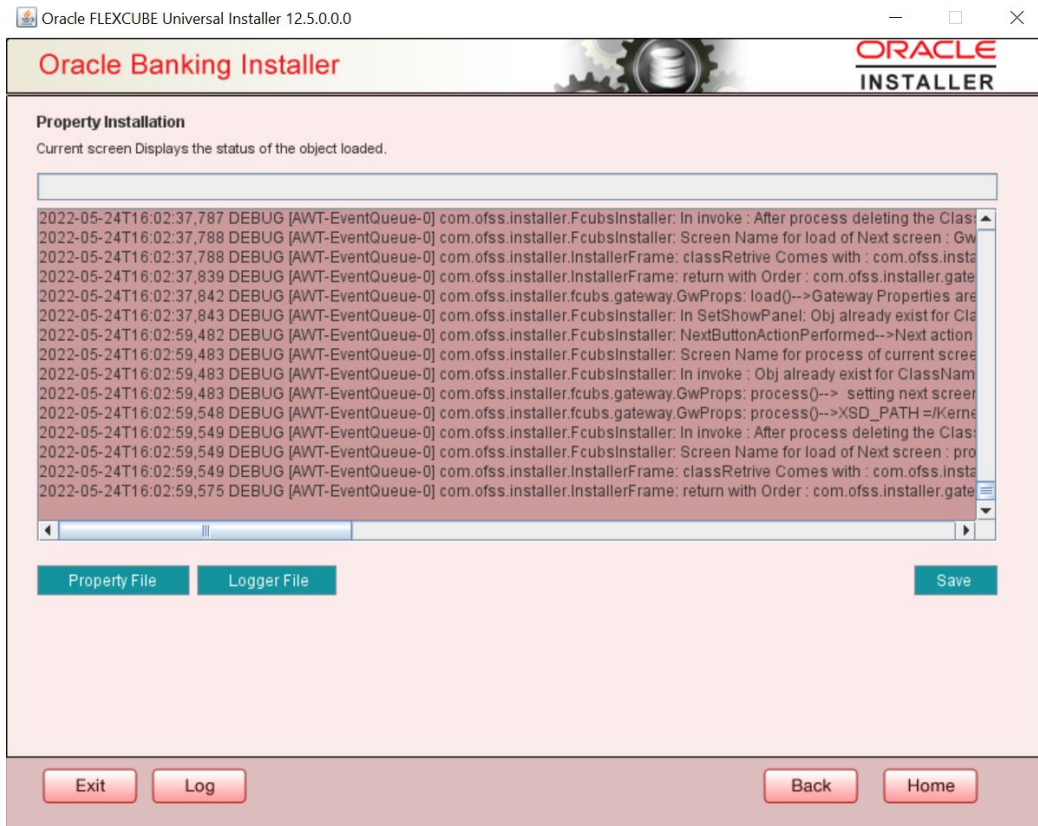
MSG IN LOG Required

Choose Yes/No from drop down box

MSG OUT LOG Required

Choose Yes/No from drop down box.

10. Click 'Next'. The following screen is displayed.



The property file will be created in a temporary folder.

11. Click 'Property File' to view the created property file.

12. Click 'Save' to save the created property file in desired location.

1.2.2 Gateway MDB Application

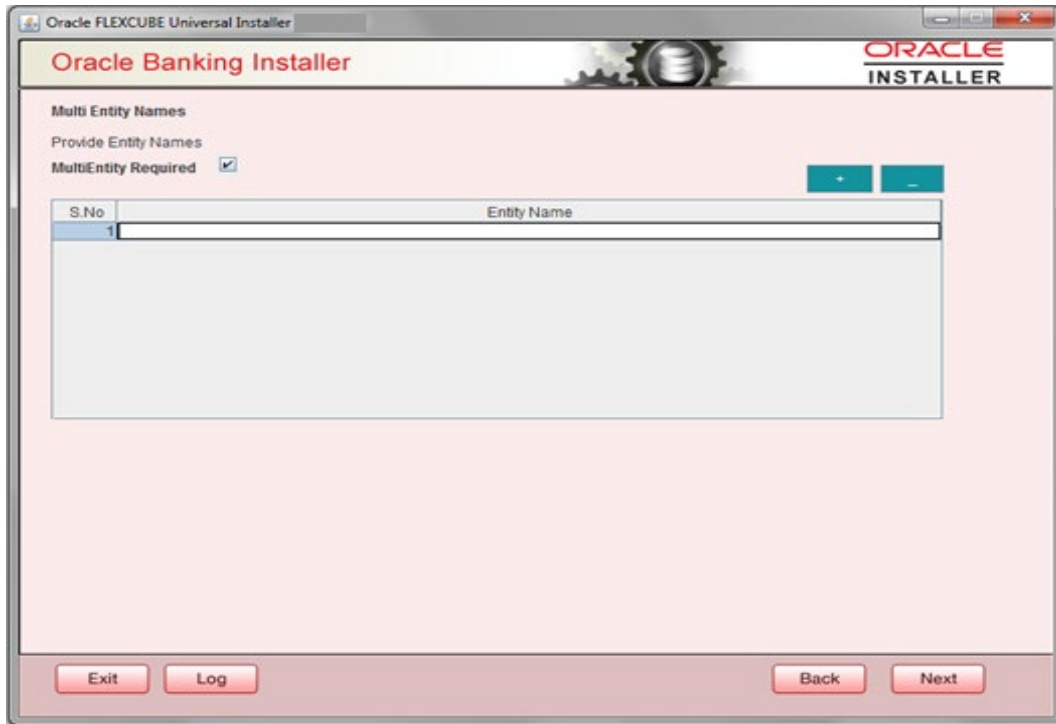
Follow the steps given below:

1. Select 'Gateway MDB' as the application type as shown in the below Screen.



2. Click 'Next'. The following screen is displayed:

The installer displays the 'Multi Entity' screen.



MultiEntity Required

Select the multi entity check box for enabling the multi entity deployment.

After selecting the multi entity option '+', '-' buttons will be enabled for capturing the entity Name

+ Button:

New row will be added for capturing new entity name.

- Button:

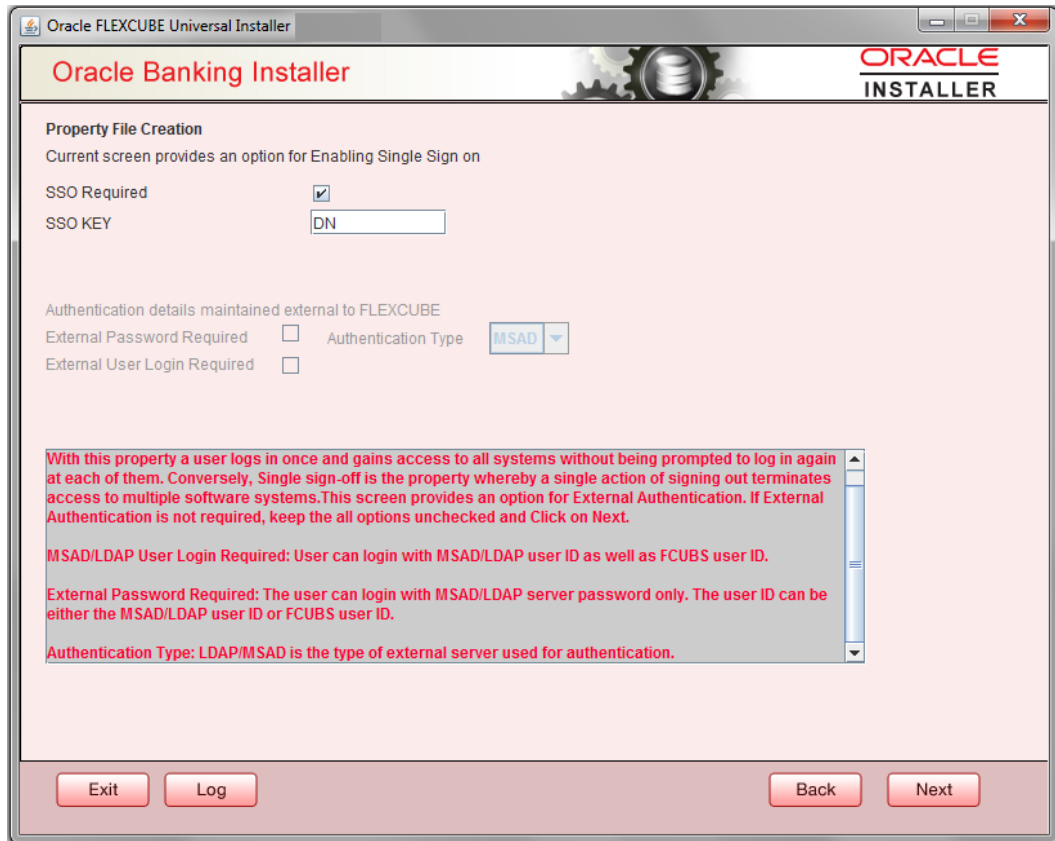
Select the entity name and click – button, deletion of existing entity name will be done

Entity Name:

Enter the entity name as single word

For example: ENTITY1

3. Click 'Next'. The following screen is displayed:



4. Specify the following details.

SSO Required

Check this box to enable single sign-on (SSO). If you check this box, you need to specify the SSO Key.

SSO Key

Specify the SSO key. If you have checked the box 'SSO Required', it is mandatory to specify the SSO key.

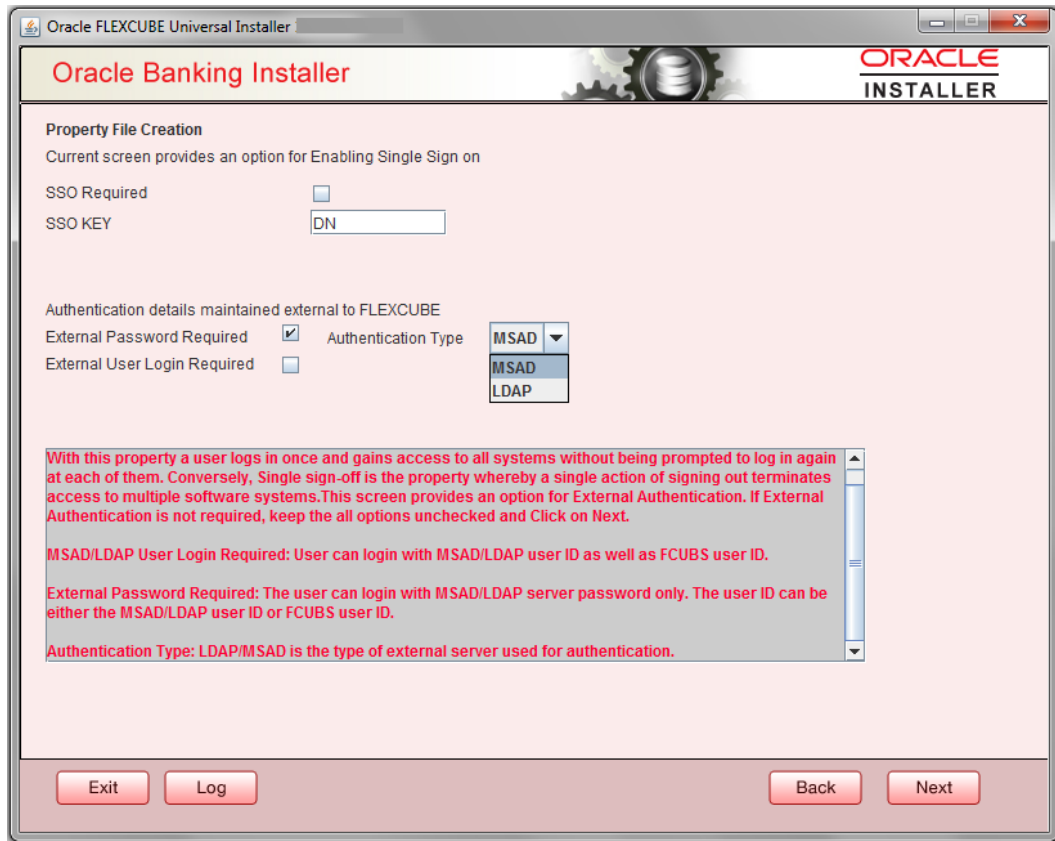
If you have checked the box 'SSO Required', then the Installer will skip the following two screens and will directly navigate to the Modifying the Gateway properties Screen.

External Password Required

Check this box to allow the user-login using MSAD/LDAP password irrespective of the user ID. If you check this box, the user ID can be either the MSAD/LDAP user ID or the FCUBS user ID. And the password can be MSAD/LDAP server password only.

By default, this check box is unchecked. However, you can change this.

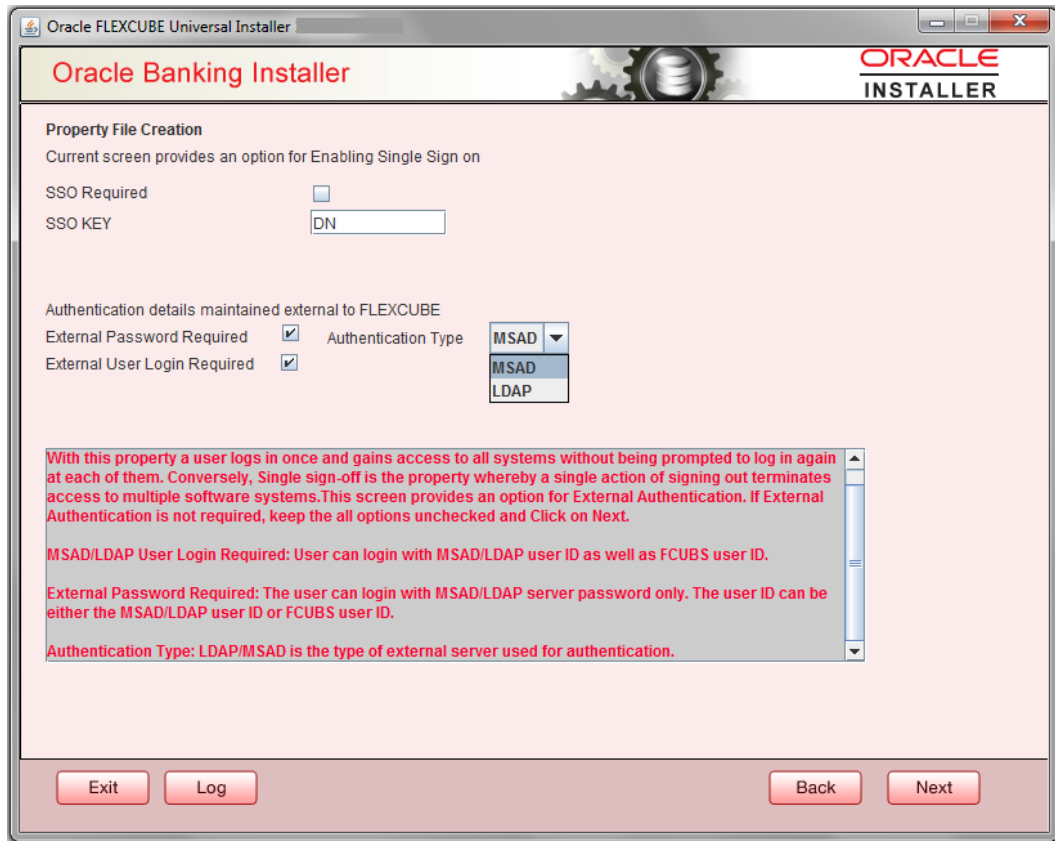
If you do not check this box, the installer skips the following screen and directly navigates you to the Modifying the Gateway Properties Screen.




External User Login Required

Check this box to enable user login using MSAD/LDAP user ID. If you check this box, the user can login using MSAD/LDAP server user ID as well as using FCUBS user ID. If you do not check this, the user can login using FCUBS user ID only.

By default, this check box is unchecked. However, you can change this.



 The field 'Authentication Type' is enabled if one of the above check boxes is checked:

Authentication Type

Select the authentication type from the adjoining drop-down list. This is the type of external server that is used. You can select one of the following options:

- MSAD (Microsoft Active Directory)
- LDAP (Lightweight Directory Access Protocol)

By default, 'MSAD' is selected; however, you can change it.

4. Click 'Next'. The following screen is displayed.

The screenshot shows the 'Oracle FLEXCUBE Universal Installer' window. The title bar says 'Oracle FLEXCUBE Universal Installer'. The main window has a header with 'Oracle Banking Installer' and the 'ORACLE INSTALLER' logo. Below the header, it says 'Property File Creation' and 'LDAP Server Details for Gateway'. There is a table with 5 rows and 3 columns: 'No.', 'Name', and 'Value'. The table contains the following data:

No.	Name	Value
1	LDAP SERVER URL	LDAP://10.10.10.10:111
2	LDAP SSL ENABLED	<input type="checkbox"/>
3	SECURITY AUTHENTICATIO...	Simple
4	DOMAIN NAME	I-FLEX.COM
5	LDAP SERVER TIMEOUT	0

At the bottom of the window, there are four buttons: 'Exit', 'Log', 'Back', and 'Next'.

5. Specify the following LDAP server details.

LDAP Server URL

Specify the URL to access the LDAP server where the external user ID and password are maintained.

LDAP SSL Enabled

Check this box if the LDAP server is SSL enabled. If you check this box, then you need to specify the SSL port also in the field LDAP SERVER URL.

By default, this check box is unchecked. However, you can change this.

Security Authentication Type

Depending on the authentication mechanism supported by the LDAP server, select one of the following:

- Simple
- Strong



Note the following::

- Different servers support different authentication mechanisms.
- By default, the security authentication type is 'Simple'; however, you can change this.

Domain Name

Specify the domain name.

LDAP Server Timeout

Specify the LDAP server timeout in milliseconds. This must be a positive integer value. For example you can specify 1000, 10000 or 5000. If it is zero or less, it indicates that no read timeout is specified. Then the wait for the response infinite until it is received.

By default, the LDAP server timeout is zero; however, you can change this.

6. Click 'Next'. The following screen is displayed:

7. Specify the following details.

XSD Path

Specify the path to the XSD file. File name is not required. File separator must be '/'. There must be a '/' at the end. All the relevant XSD files must be manually copied to this location.

E.g.:

For Windows: D:\Kernel11.1\GW_MDB\XSD\

For Linux: /Kernel11.1/GW_MDB/XSD/

Logger File

Specify the path to the 'gw_mdb_logger.properties' file with the file name. The file must be manually copied to the specified location.

E.g.:

For windows: D:\Kernel11.1\GW_MDB\config\gw_mdb_logger.properties

For Linux: /Kernel11.1/GW_MDB/config/gw_mdb_logger.properties

Debug Path

Specify the path to the folder where the application creates the logs. There must be a '/' at the end. You need to manually create the folder structure.

E.g.:

For windows: D:\Kernel11.1\GW_MDB\log\

For Linux: /Kernel11.1/GW_MDB/log/

Security Key for Encryption

Specify the security key for the Encryption, here in this case it is 'oraclefinancials'.

SMS Pool Name

Specify SMS Pool Name, here in this case it is 'jdbc/fcjdevDSSMS'

DataSource

The JDBC data source is an object bound to JNDI tree and provides database connectivity through a pool of JDBC connections.

POSS Datasource

Check this box if POSS is required. If you check this box, you need to specify the POSS Datasource Name in the field below this.

OPSS Available

Indicate whether OPSS-CSF is installed or not.



Please choose this only if Oracle Platform Security Services - Credential Store Framework (CSF) is installed as per the guidelines in the pre-requisite document. It is recommended that you install CSF for safeguarding application specific security credentials.


Distributed Schema

If the schema is distributed, select 'Yes'.

If the schema is not distributed, select 'No'.

8. Click 'Next'. The following screen is displayed.

Oracle FLEXCUBE Universal Installer 12.5.0.0.0

Oracle Banking Installer  **ORACLE INSTALLER**

Gateway Property File Creation
Current screen provides an option for modifying MDB Properties

No.	Name	Value
1	Request Queue	MDB_QUEUE
2	Response queue	MDB_QUEUE_RESPONSE
3	DL Queue	MDB_QUEUE_DLQ
4	Connection Factory	MDBQCF
5	Secure Queue	<input type="checkbox"/>
6	Caller ID	
7	Caller Password	

Exit Log Back Next

9. Specify the following details:

Request Queue

Specify the request queue. This is the point-to-point destination type used for asynchronous peer communication.

E.g.: MDB_QUEUE

Response Queue

Specify the response queue name.

E.g.: MDB_QUEUE_RESPONSE

DL Queue

Specify the dead letter queue name.

E.g.: MDB_QUEUE_DLQ

Note: Refer Resources_To_Be_Created.docx for creation of Queues

Connection Factory

Specify the connection configuration parameters to create connections for JMS clients.

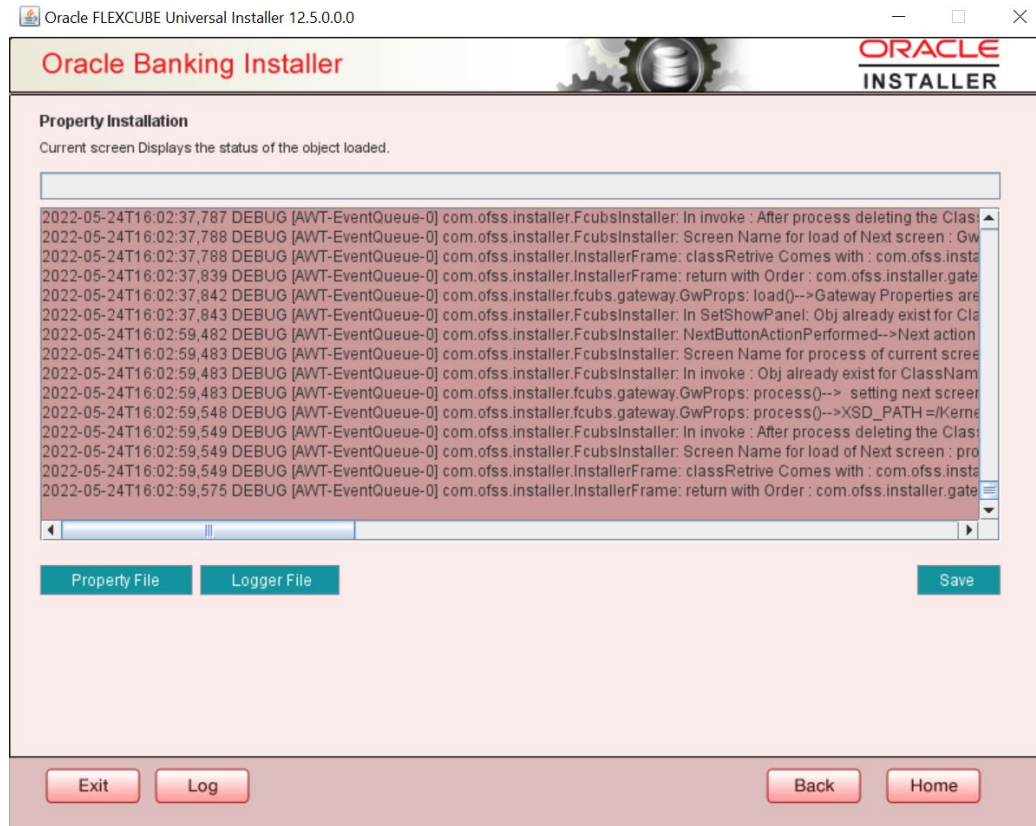
E.g.: MDBQCF.

Secure Queue

Check this box if the Caller ID and Caller Password values have to be entered.

The Installer creates two files viz. 'gw_mdb_logger.properties' and 'GW_MDB_Prop.properties' in the path provided to save the files.

10. Click 'Next'. The following screen is displayed.



The property file will be created in a temporary folder.

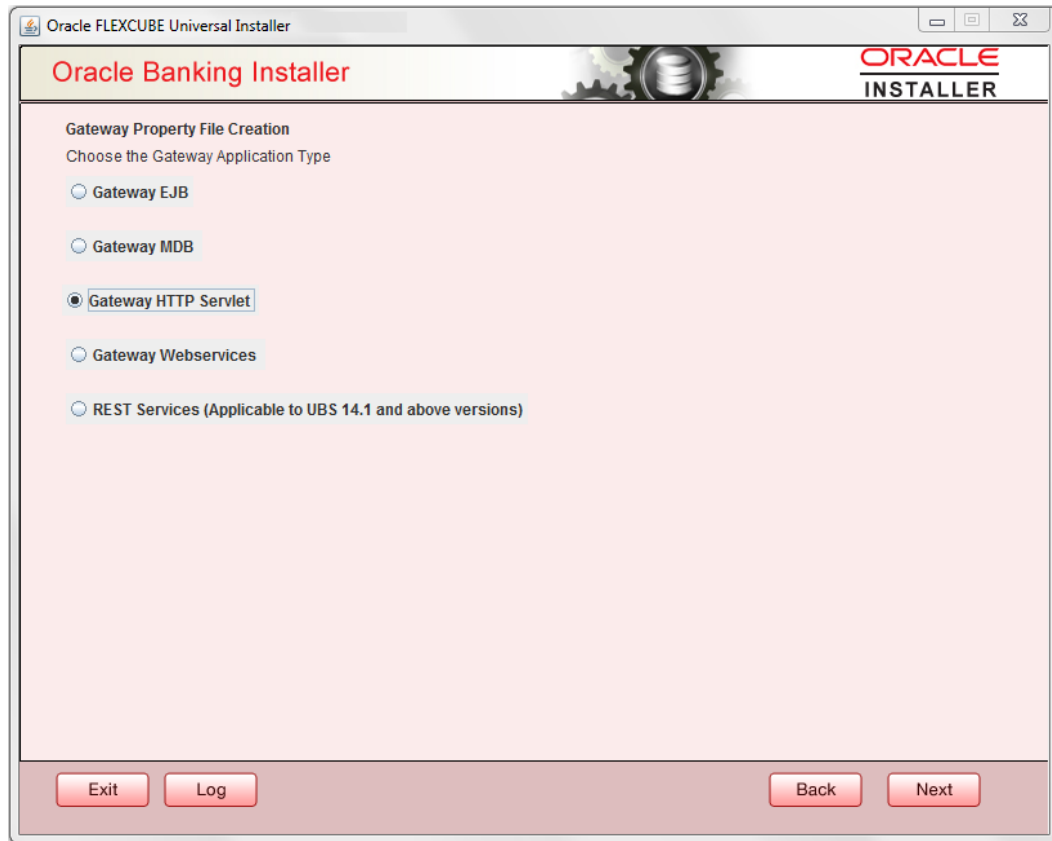
11. Click 'Property File' to view the created property file.

12. Click 'Save' to save the created property file in desired location.

1.2.3 Gateway HTTP Servlet Application

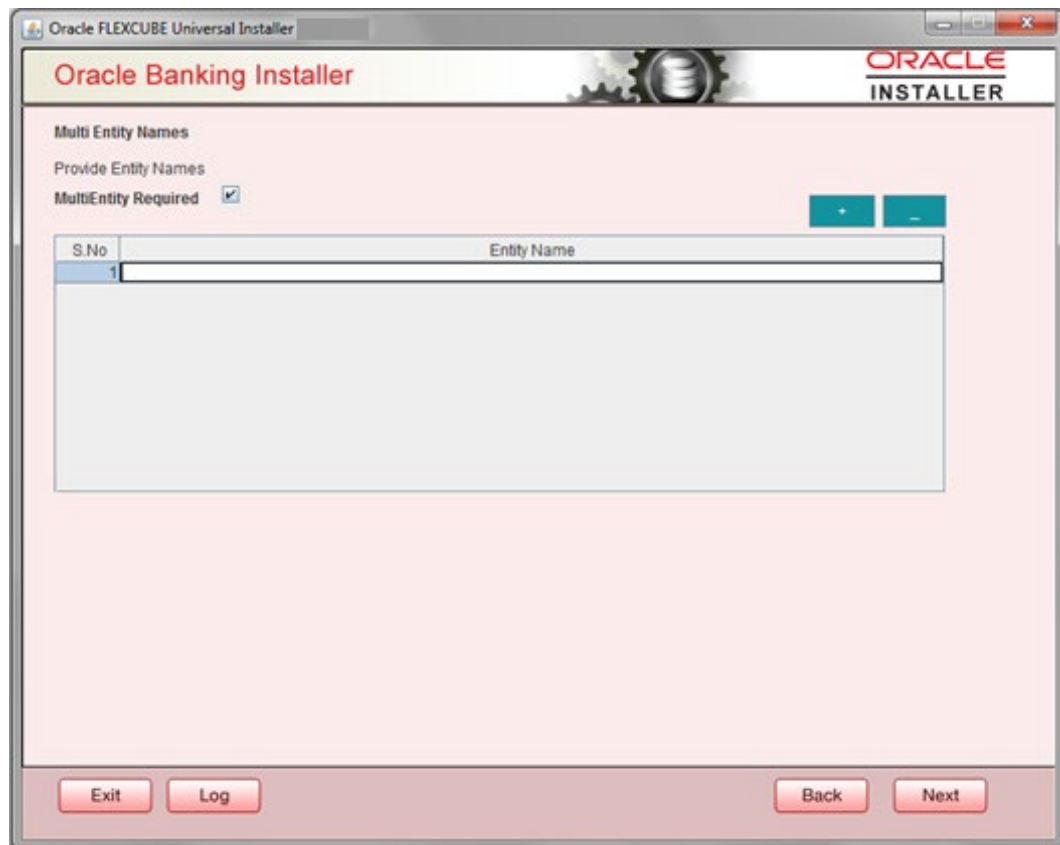
Follow the steps given below:

1. Select 'Gateway HTTP Servlet' as the application type as shown in the below Screen.



2. Click 'Next'. The following screen is displayed:

The installer displays the 'Multi Entity' screen



MultiEntity Required

Select the multi entity check box for enabling the multi entity deployment.

After selecting the multi entity option '+', '-' buttons will be enabled for capturing the entity Name

+ Button:

New row will be added for capturing new entity name.

- Button:

Select the entity name and click – button, deletion of existing entity name will be done

Entity Name:

Enter the entity name as single word

For example: ENTITY1

3. Click 'Next'. The following screen is displayed:

4. Specify the following details.

XSD Path

Specify the path to the XSD file. File name is not required. File separator must be '/'. There must be a '/' at the end. All the relevant XSD files must be manually copied to this location.

E.g.:

For Windows: D:\Kernel11.1\GW_HTTP\XSD\

For Linux: /Kernel11.1/GW_HTTP/XSD/

Logger File

Specify the path to the 'gw_http_logger.properties' file with the file name. The file must be manually copied to the specified location.

E.g.:

For windows: D:\Kernel11.1\GW_HTTP\config\gw_http_logger.properties

For Linux: /Kernel11.1/GW_HTTP/config/gw_http_logger.properties

Debug Path

Specify the path to the folder where the application creates the logs. There must be a '/' at the end. You need to manually create the folder structure.

E.g.:

For windows: D:\Kernel11.1\GW_HTTP\log\

For Linux: /Kernel11.1/GW_HTTP/log/

Security Key for Encryption

Specify the security key for the Encryption, here in this case it is 'oraclefinancials'.

SMS Pool Name

Specify SMS Pool Name, here in this case it is 'jdbc/fcjdevDSSMS'

DataSource

The JDBC data source is an object bound to JNDI tree and provides database connectivity through a pool of JDBC connections.

POSS DataSource

Check this box if POSS is required. If you check this box, you need to specify the POSS DataSource Name in the field below this.

OPSS Available

Indicate whether OPSS-CSF is installed or not.



Please choose this only if Oracle Platform Security Services - Credential Store Framework (CSF) is installed as per the guidelines in the pre-requisite document. It is recommended that you install CSF for safeguarding application specific security credentials.

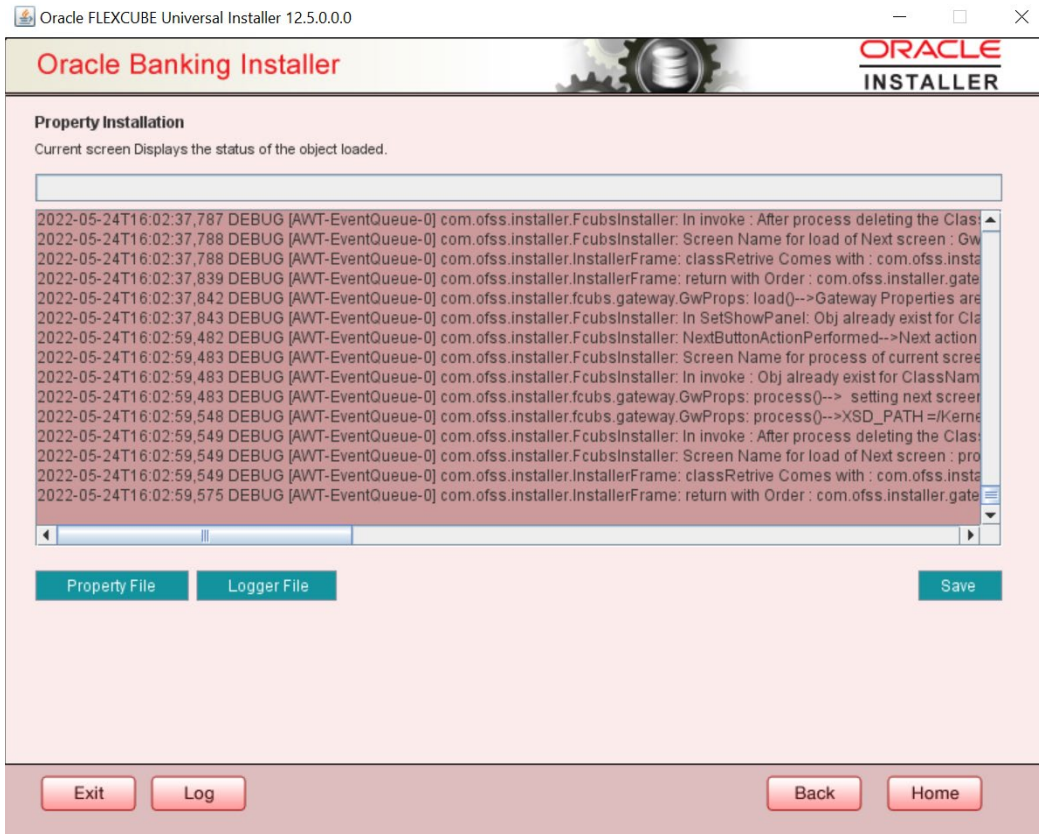
Distributed Schema

If the schema is distributed, select 'Yes'.

If the schema is not distributed, select 'No'.

The Installer creates two files viz. 'gw_http_logger.properties' and 'GW_HTTP_Prop.properties' in the path provided to save the files.

5. Click 'Next'. The following screen is displayed.



The property file will be created in a temporary folder.

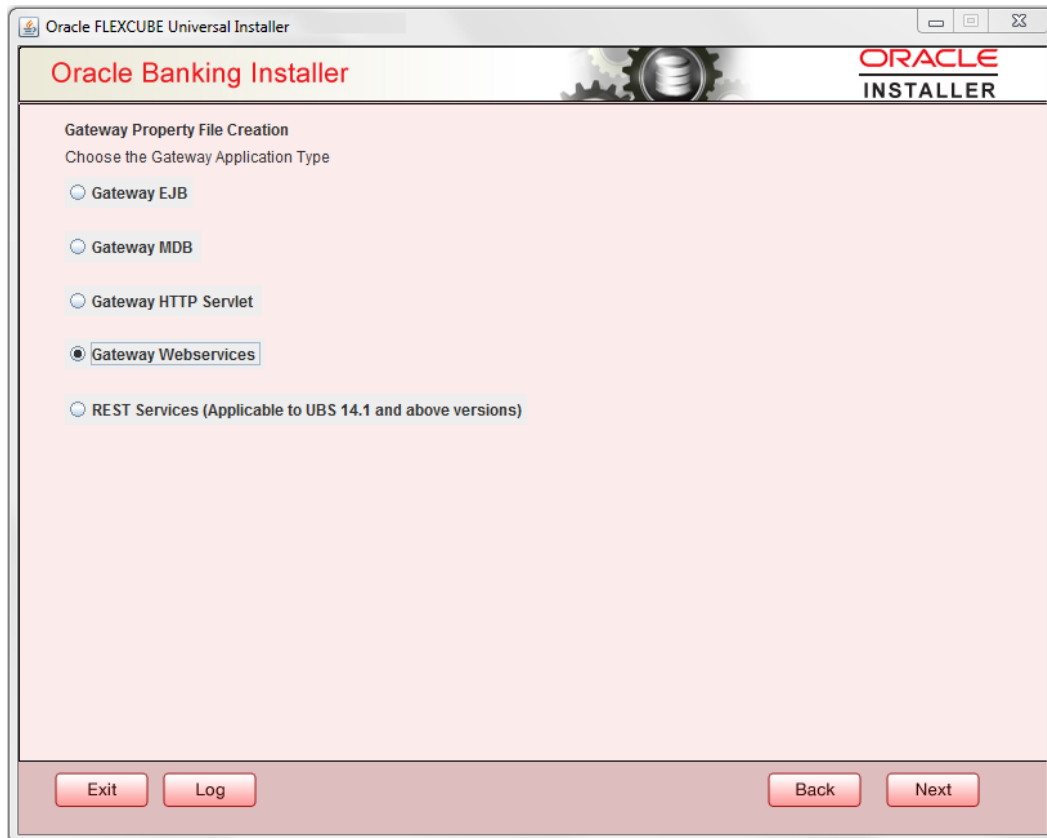
6. Click 'Property File' to view the created property file.
7. Click 'Save' to save the created property file in desired location.

The property file will be created in the specified folder.

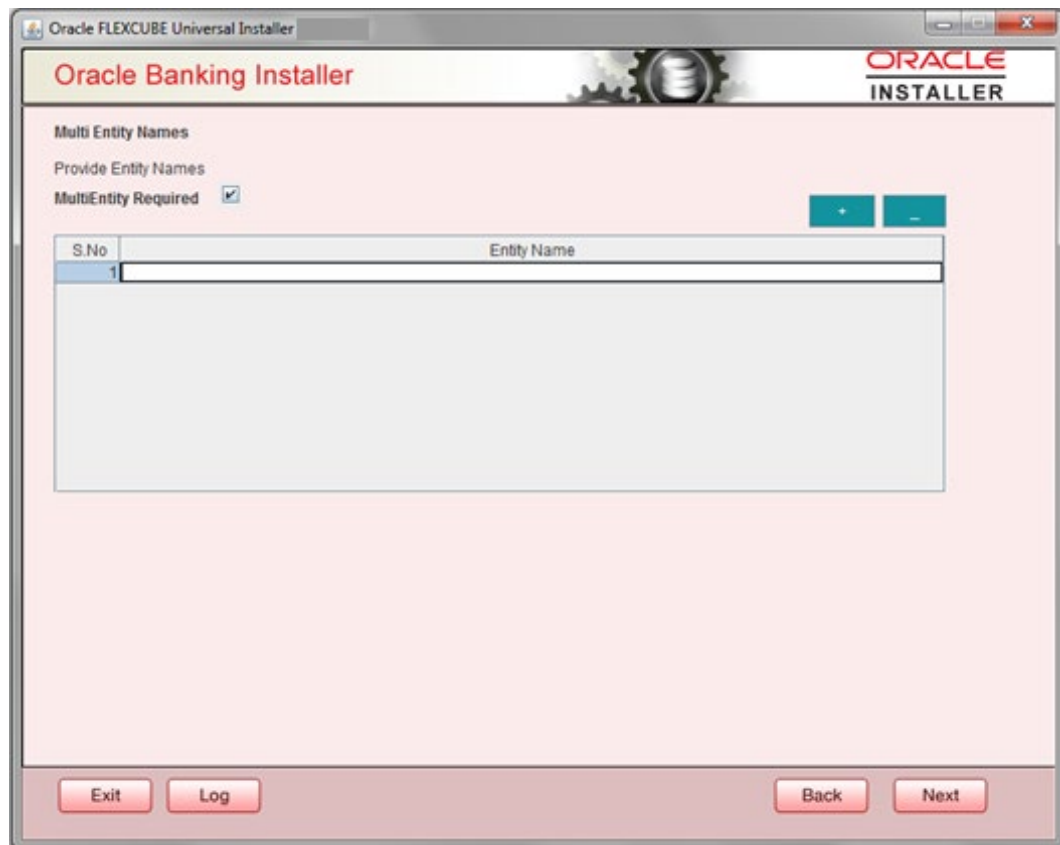
1.2.4 Gateway Web Service Application

Follow the steps given below:

1. Select 'Gateway Web Service' as the application type as shown in the below Screen.



2. Click 'Next'. The following screen is displayed.
The installer displays the 'Multi Entity' screen.



MultiEntity Required

Select the multi entity check box for enabling the multi entity deployment.

After selecting the multi entity option '+', '-' buttons will be enabled for capturing the entity Name

+ Button:

New row will be added for capturing new entity name.

- Button:

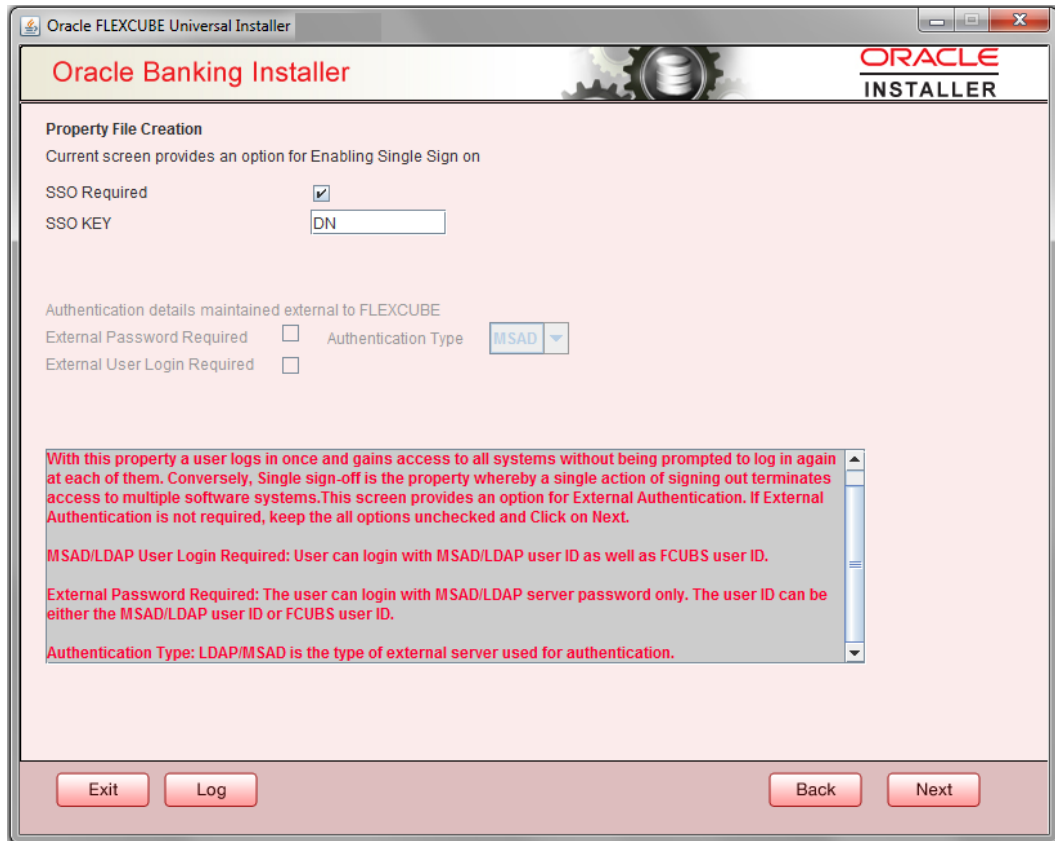
Select the entity name and click – button, deletion of existing entity name will be done

Entity Name:

Enter the entity name as single word

For example: ENTITY1

3. Click 'Next'. The following screen is displayed:



4. Specify the following details.

SSO Required

Check this box to enable single sign-on (SSO). If you check this box, you need to specify the SSO Key.

SSO Key


Specify the SSO key. If you have checked the box 'SSO Required', it is mandatory to specify the SSO key.

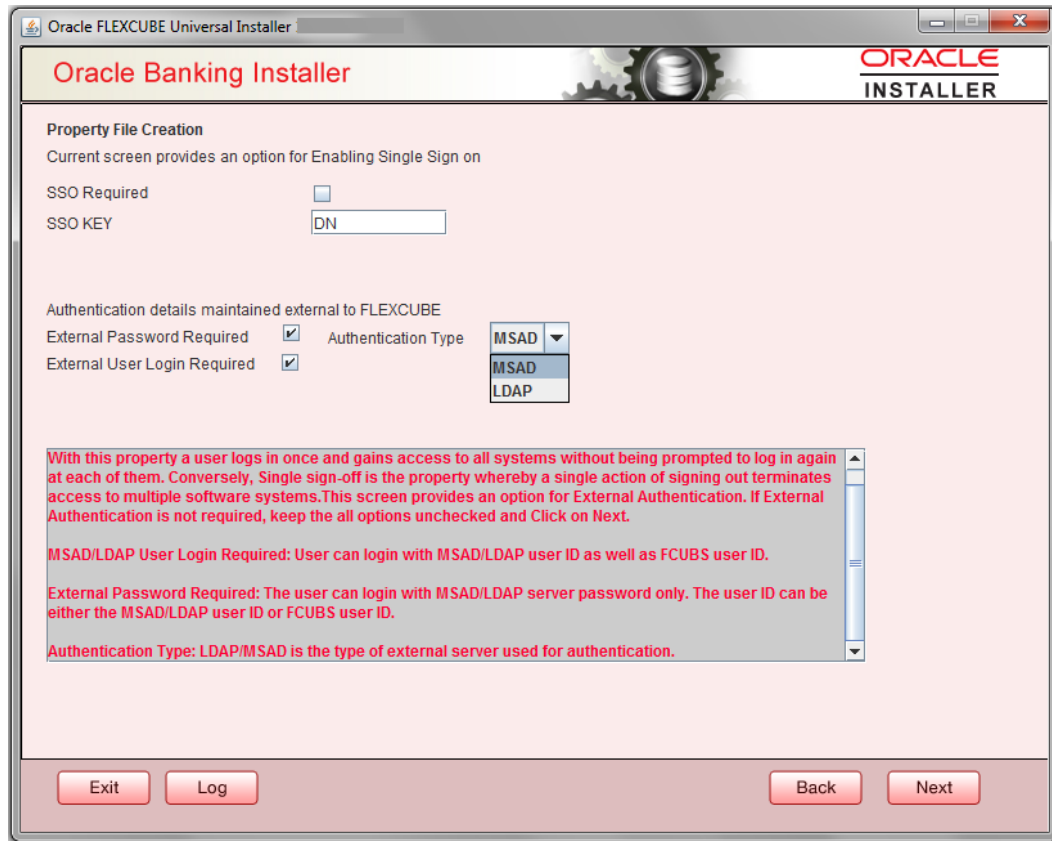
If you have checked the box 'SSO Required', then the Installer will skip the following two screens and will directly navigate to the SSL screen shown below in this manual.

If you have not checked the box 'SSO Required', then click 'Next'. The following screen is displayed.

External User Login Required

Check this box to enable user login using MSAD/LDAP user Id.

 If you check this box, the user can login with MSAD/LDAP server user Id as well as FCUBS user Id. If you do not check this box, the user can login using FCUBS user Id only.



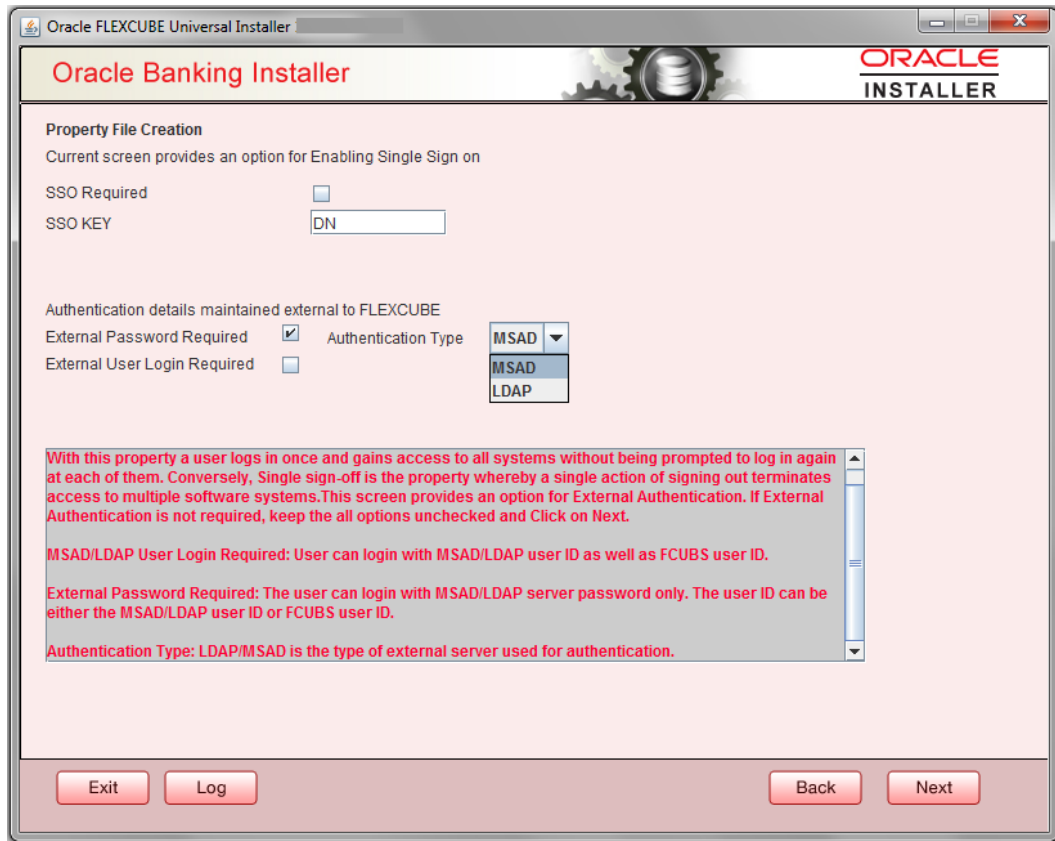
External Password Required

Check this box to allow user login using MSAD/LDAP password irrespective of the user Id.

STOP If you check this box, the user can login using MSAD/LDAP server password only. The user Id can be one of the following:

- MSAD/LDAP user Id
- FCUBS user Id

If you do not check this box, then the installer skips the following screen and directly navigates to the Modifying Gateway Properties screen.



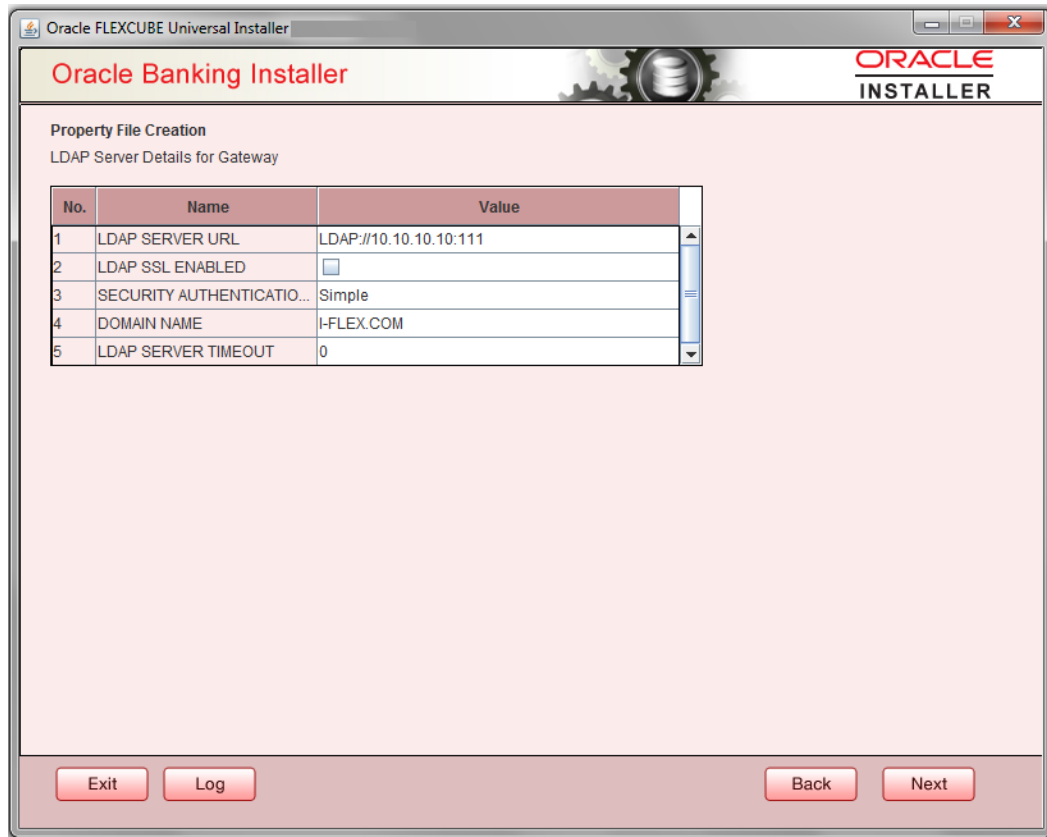
Authentication Type

Select the authentication type. This is the type of external server that is used. You can select one of the following options:

- MSAD (Microsoft Active Directory)
- LDAP (Lightweight Directory Access Protocol)

The default option is MSAD; however, you can change it

5. If you check the box, then the installer navigates to the following screen on clicking 'Next' button.



6. Specify the following LDAP server details.

LDAP Server URL

Specify the URL to access the LDAP server where the external user ID and password are maintained.

LDAP SSL Enabled

Check this box if the LDAP server is SSL enabled. If you check this box, then you need to specify the SSL port also in the field LDAP SERVER URL.

By default, this check box is unchecked. However, you can change this.

Security Authentication Type

Depending on the authentication mechanism supported by the LDAP server, select one of the following:

- Simple
- Strong



Note the following:

- Different servers support different authentication mechanisms.
- By default, the security authentication type is 'Simple'; however, you can change this.

Domain Name

Specify the domain name.

LDAP Server Timeout

Specify the LDAP server timeout in milliseconds. This must be a positive integer value. For example you can specify 1000, 10000 or 5000. If it is zero or less, it indicates that no read timeout is specified. Then the wait for the response infinite until it is received.

By default, the LDAP server timeout is zero; however, you can change this.

7. Click 'Next'. The following screen is displayed:

The screenshot shows the 'Oracle Banking Installer' window titled 'Oracle FLEXCUBE Universal Installer 12.5.0.0.0'. The main heading is 'Property File Creation' with a subtitle 'Current screen provides an option for modifying the Gateway Properties'. The form contains the following fields and options:

- XSD Path: /Kernel11.1/GW_EJB/XSD/
- Logger File: /Kernel11.1/GW_EJB/config/gw_ejb_logger.properties
- Debug Path: /Kernel11.1/GW_EJB/log/
- Security Key for Encryption: oraclefinancials
- SMS Pool Name: jdbc/fcdevDSSMS
- DataSource: FLEXTTEST.WORLD
- POSS DataSource: ☐ POSS DataSource ☒ OPSS CSF Available
- POSS DataSource: POSSTEST.WORLD
- Distributed Schema: No (dropdown)
- MSG IN log Required: No (dropdown)
- MSG OUT log Required: No (dropdown)
- Integration with CN Logger: ☐

At the bottom, there are buttons for 'Exit', 'Log', 'Back', and 'Next'.

8. Specify the following details.

XSD Path

Specify the path to the XSD file. File name is not required. File separator must be '/'. There must be a '/' at the end. All the relevant XSD files must be manually copied to this location.

E.g.:

For Windows: D:\Kernel11.1\GW_WS\XSD\

For Linux: /Kernel11.1/GW_WS/XSD/

Logger File

Specify the path to the 'gw_ws_logger.properties' file with the file name. The file must be manually copied to the specified location.

E.g.:

For windows: D:\Kernel11.1\GW_WS\config\gw_ws_logger.properties

For Linux: /Kernel11.1/GW_WS/config/gw_ws_logger.properties

Debug Path

Specify the path to the folder where the application creates the logs. There must be a '/' at the end. You need to manually create the folder structure.

E.g.:

For windows: D:\Kernel11.1\GW_WS\log\

For Linux: /Kernel11.1/GW_WS/log/

Security Key for Encryption

Specify the security key for the Encryption, here in this case it is 'oraclefinancials'.

SMS Pool Name

Specify SMS Pool Name, here in this case it is 'jdbc/fcjddevDSSMS'

DataSource

The JDBC data source is an object bound to JNDI tree and provides database connectivity through a pool of JDBC connections.

POSS DataSource

Check this box if POSS is required. If you check this box, you need to specify the POSS DataSource Name in the field below this.

OPSS CSF Available

Indicate whether OPSS-CSF is installed or not.



Please choose this only if Oracle Platform Security Services - Credential Store Framework (CSF) is installed as per the guidelines in the pre-requisite document. It is recommended that you install CSF for safeguarding application specific security credentials.

Distributed Schema

If the schema is distributed, select 'Yes'.

If the schema is not distributed, select 'No'.

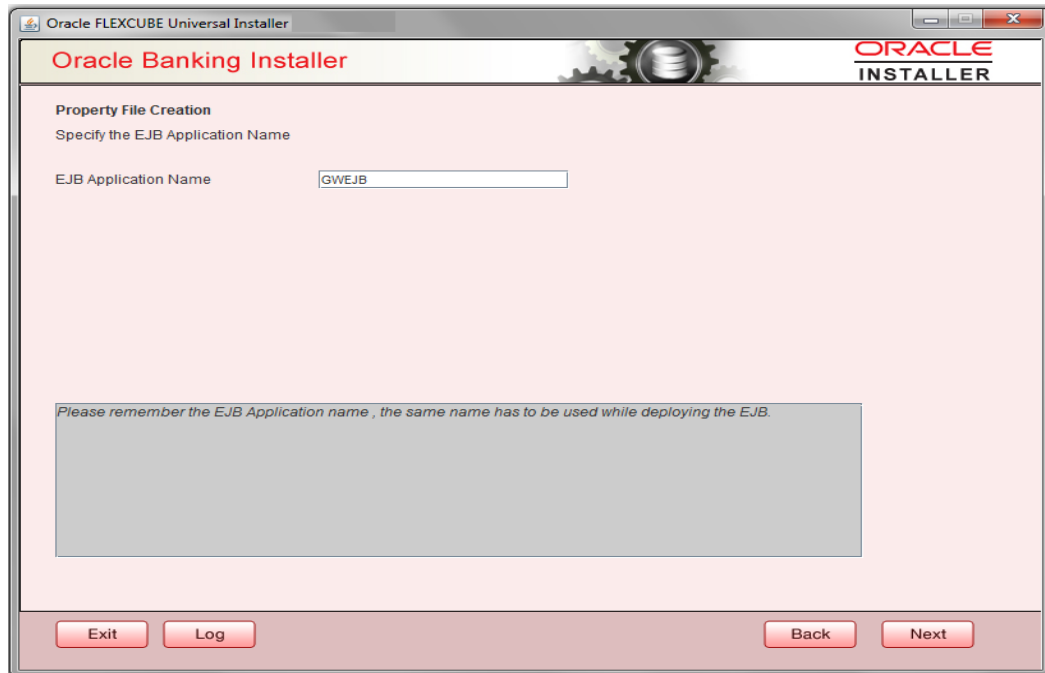
MSG IN LOG Required

Choose Yes/No from drop down box

MSG OUT LOG Required

Choose Yes/No from drop down box.

9. Click 'Next'. The following screen is displayed.



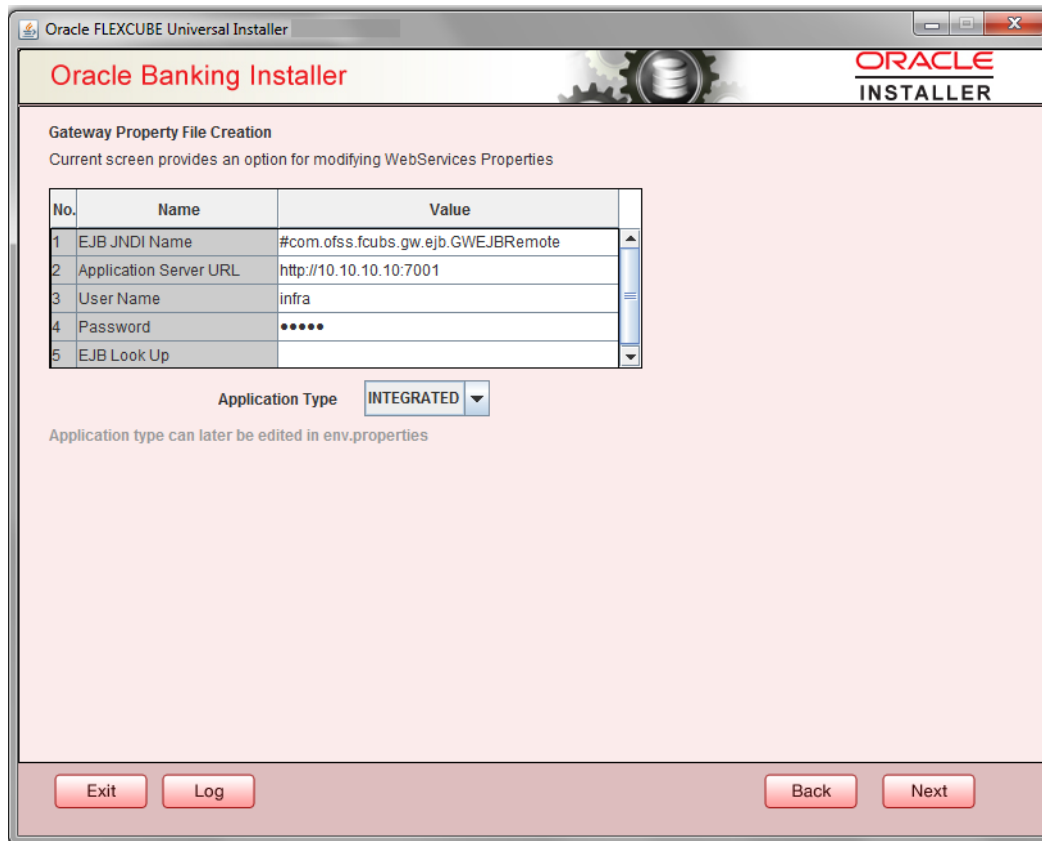
10. Specify the following details:

EJB Application Name

Specify the name of the EJB application deployed.

E.g.: GWEJB.

11. Click 'Next'. The following screen is displayed.



12. Specify the following details:

EJB JNDI Name

If you build the EJB application with GWEJB name, this will create the name with which the EJB EAR file is built.

If you select EJB Call Type as REMOTE, this will create
'<EJB_APPLICATION_NAME>#com.ofss.fcubs.gw.ejb.GWEJBRemote. in
'GW_WS_Prop.properties' file

E.g.:

Weblogic/ : GWEJB #com.ofss.fcubs.gw.ejb.GWEJBRemote

Application Server URL

Specify the URL of the application server where the webservice application is hosted.

E.g.:

Weblogic: [t3://10.10.10.10:7001](http://10.10.10.10:7001)

User Name

Specify the user name to access the application server where the EJB application is deployed.


E.g.: infra


Password

Specify the password for the above user name.

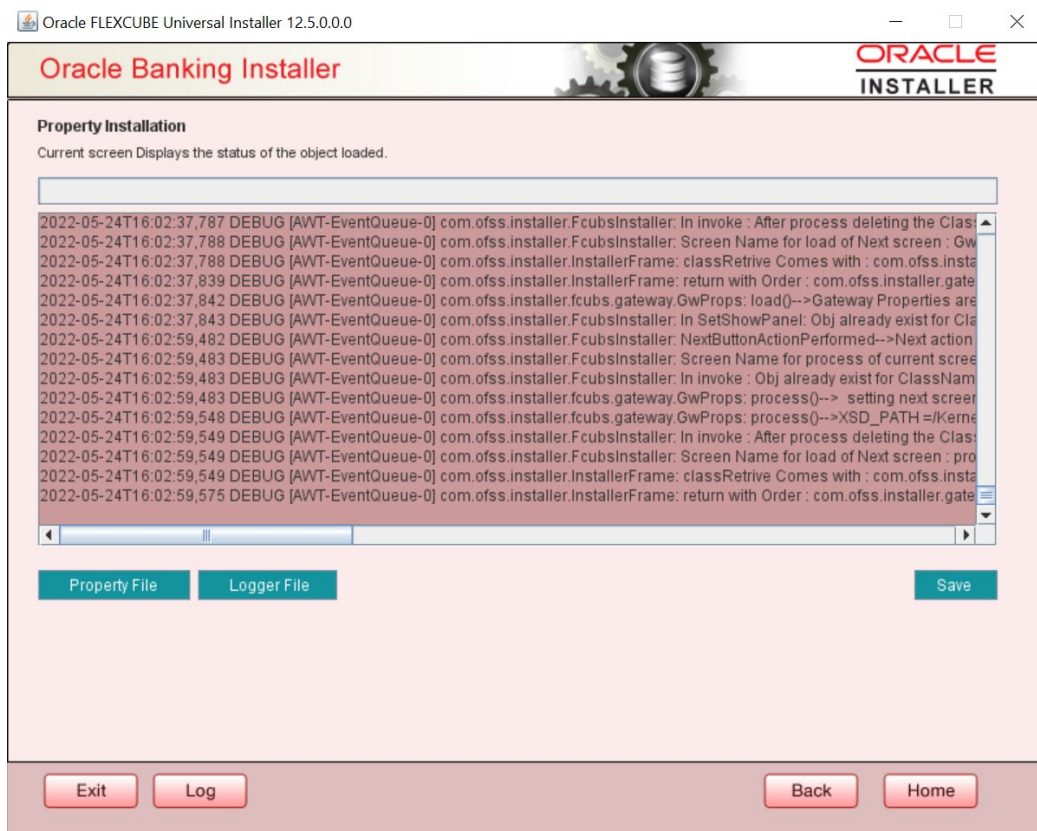
13. Specify the EJB Look Up as 'LOCAL'.

14. Select the Application Type, from the drop down list as 'INTEGRATED'.

 Application type can later be edited in env.properties if 'INDIVIDUAL' deployment type is required.

 The Installer creates two files viz. 'gw_ws_logger.properties' and 'GW_WS_Prop.properties' in the path provided to save the files.

15. Click 'Next'. The following screen is displayed.




The property file will be created in a temporary folder.

16. Click 'Property File' to view the created property file.

17. Click 'Save' to save the created property file in the desired location.

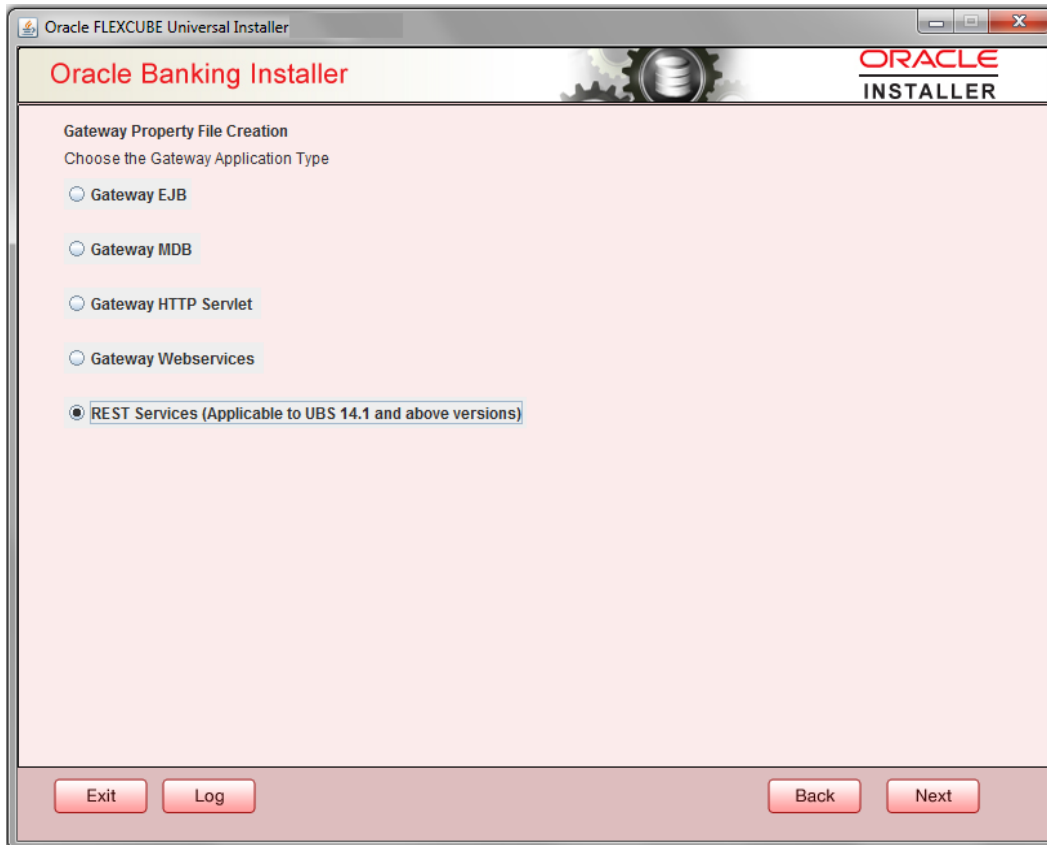
The property file will be created in a temporary folder.

 For Gateway EAR Building refer 'FCUBS_EAR_Building.docx'

1.2.5 REST Services Application

Follow the steps given below:

1. Select 'Gateway Web Service' as the application type as shown in the below Screen.



2. Click 'Next'. The following screen is displayed to capture Schema details. Enter valid username, password, IP Address, port and TNS descriptor and click on "Test Connection" button.



3. Successful test connection will enable Next button. Click on it o proceed to next page.

Property File Creation
Current screen provides an option for modifying the Gateway Properties

XSD Path	<input type="text" value="/Kernel11.1/GW_EJB/XSD/"/>		
Logger File	<input type="text" value="/Kernel11.1/GW_EJB/config/gw_ejb_logger.properties"/>		
Debug Path	<input type="text" value="/Kernel11.1/GW_EJB/log/"/>		
Security Key for Encryption	<input type="text" value="oraclefinancials"/>		
SMS Pool Name	<input type="text" value="jdbc/fcdevDSSMS"/>		
DataSource	<input type="text" value="FLEXTEST.WORLD"/>		
	<input type="checkbox"/> POSS DataSource	<input checked="" type="checkbox"/> OPSS CSF Available	
POSS DataSource	<input type="text" value="FOSSTEST.WORLD"/>		
Distributed Schema	<input type="button" value="No"/> ▼		
MSG IN log Required	<input type="button" value="No"/> ▼	MSG OUT log Required	<input type="button" value="No"/> ▼
<input type="checkbox"/> Integration with CN Logger			

Exit Log Back Next

4. In above page, enter the below REST EJB details:

REST EJB Logger File

Enter logger property file path.

REST EJB Debug Path

Enter path where debugs are to be written.

REST EJB Security Key for Encryption

Specify the security key for the Encryption. In this case it is 'oraclefinancials'.

REST EJB Msg Schema Pool Name

Enter valid pool name. by default it is : jdbc/fcdevDSSMS

MSG IN LOG Required

Choose Yes/No from drop down box.

MSG OUT LOG Required

Choose Yes/No from drop down box.

5. Click on Next Button to enter REST Services information.

Oracle Banking Installer

REST Services Properties

Current screen provides an option for modifying the REST Services Properties

REST Services Logger File: /Kernel11.1/RESTServices/config/gw_rest_logger.properties

REST Services Debug Path: /Kernel11.1/RESTServices/log/

REST Services Security Key for Encryption: oraclefinancials

REST Services Msg Schema Pool Name: jdbc/fcdevDSSMS

Authentication Scheme: FLEXCUBE Deployment Type: INDIVIDUAL

REST Client ID: oracle

REST Client Secret: CustomerServer

Access Token URL: http://10.184.132.161:14100/ms_oauth/oauth2/endpoints/oauthservice/tokens

Swagger Host: 10.10.10.10:1010 Swagger Version: 14.1

REST EJB Details

CTX Factory: weblogic.jndi.WLInitialContextFactory Provider URL: 3://10.10.10.10:1010

Security Principal: weblogic Security Credentials:

JNDI Name: GWRestEJB#com.ofss.fcc.gw.rest.GWRestRemote

Exit Log Back Next

This Screen captures below properties:

REST Services Logger File

Enter logger property file path.

REST Services Debug Path

Enter path where debugs are to be written.

REST Services Security Key for Encryption

Specify the security key for the Encryption. In this case it is 'oraclefinancials'.

REST Services Msg Schema Pool Name

Enter valid pool name. by default it is : jdbc/fcdevDSSMS

Authentication Scheme:

OAUTH and FLEXCUBE are two types of Authentication Schemes available.

Please note, for FLEXCUBE authentication Scheme, REST Client ID, REST Client Secret, Access Token URL are disabled.

The same has to be entered if AOUTH is selected.

CTX factory

Provide valid CTX factory information.

Provider URL

Enter URL with valid port number.

Security Principal

Provide Security principal username.

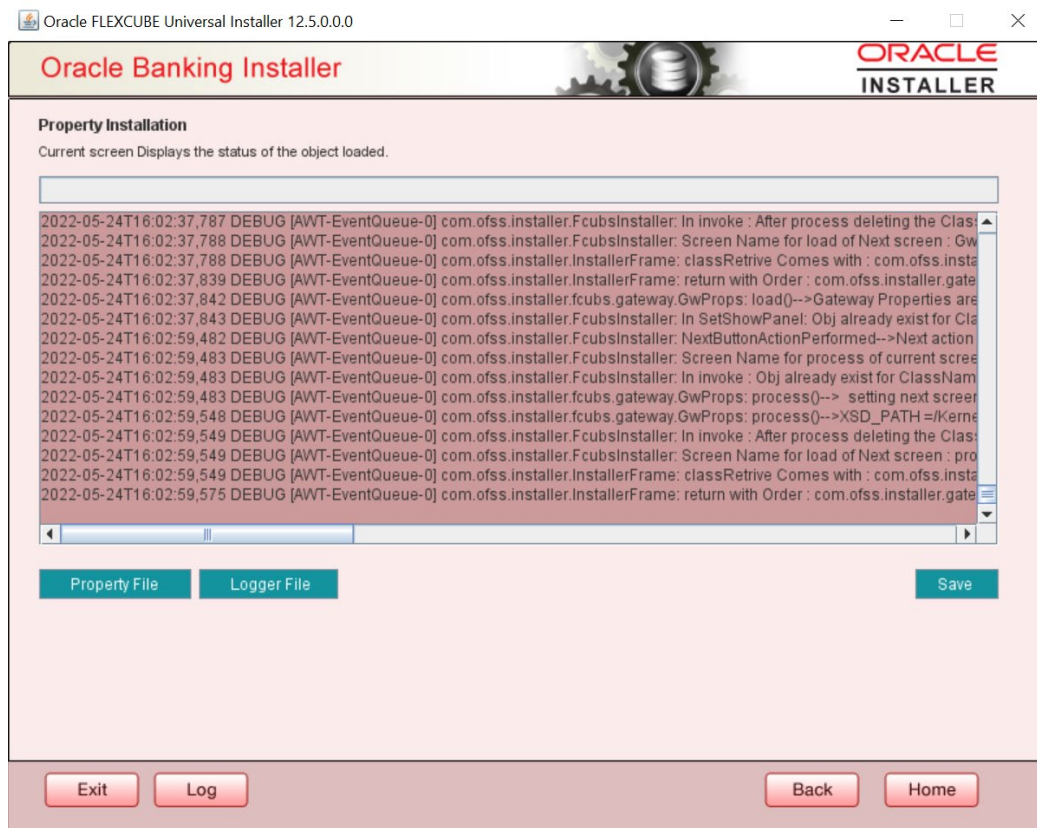
Security Credentials

Provide Security principal password.

JNDI Name

JNDI Name will be defaulted based on application server selected.

6. Click on Next button.



7. Click 'Property File' to view the created property file.
8. Click 'Save' to save the created property file in the desired location.

The property file will be created in a temporary folder



GATEWAY Property File Creation
[April] [2026]
Version 14.8.2.0.0

Oracle Financial Services Software Limited
Oracle Park
Off Western Express Highway
Goregaon (East)
Mumbai, Maharashtra 400 063
India

Worldwide Inquiries:
Phone: +91 22 6718 3000
Fax: +91 22 6718 3001
<https://www.oracle.com/industries/financial-services/index.html>

Copyright © [2007], [2026], Oracle and/or its affiliates. All rights reserved.

Oracle and Java are registered trademarks of Oracle and/or its affiliates. Other names may be trademarks of their respective owners.

U.S. GOVERNMENT END USERS: Oracle programs, including any operating system, integrated software, any programs installed on the hardware, and/or documentation, delivered to U.S. Government end users are "commercial computer software" pursuant to the applicable Federal Acquisition Regulation and agency-specific supplemental regulations. As such, use, duplication, disclosure, modification, and adaptation of the programs, including any operating system, integrated software, any programs installed on the hardware, and/or documentation, shall be subject to license terms and license restrictions applicable to the programs. No other rights are granted to the U.S. Government.

This software or hardware is developed for general use in a variety of information management applications. It is not developed or intended for use in any inherently dangerous applications, including applications that may create a risk of personal injury. If you use this software or hardware in dangerous applications, then you shall be responsible to take all appropriate failsafe, backup, redundancy, and other measures to ensure its safe use. Oracle Corporation and its affiliates disclaim any liability for any damages caused by use of this software or hardware in dangerous applications.

This software and related documentation are provided under a license agreement containing restrictions on use and disclosure and are protected by intellectual property laws. Except as expressly permitted in your license agreement or allowed by law, you may not use, copy, reproduce, translate, broadcast, modify, license, transmit, distribute, exhibit, perform, publish or display any part, in any form, or by any means. Reverse engineering, disassembly, or decompilation of this software, unless required by law for interoperability, is prohibited.

The information contained herein is subject to change without notice and is not warranted to be error-free. If you find any errors, please report them to us in writing.

This software or hardware and documentation may provide access to or information on content, products and services from third parties. Oracle Corporation and its affiliates are not responsible for and expressly disclaim all warranties of any kind with respect to third-party content, products, and services. Oracle Corporation and its affiliates will not be responsible for any loss, costs, or damages incurred due to your access to or use of third-party content, products, or services.